



Note for installing a single user licence for Xpress-MP

Single user version

Starting with Release 2005 of Xpress-MP a new licensing system is used. The big advantage is that there is no longer a need to run a licence manager on your computer. When you have acquired a licence for Xpress-MP Dash will provide you with a dongle for a USB-port (or a machine specific authorization, whichever you have chosen) and a licence file called `xpauth.xpr`. If you use a dongle, put it into an USB-port of your computer.

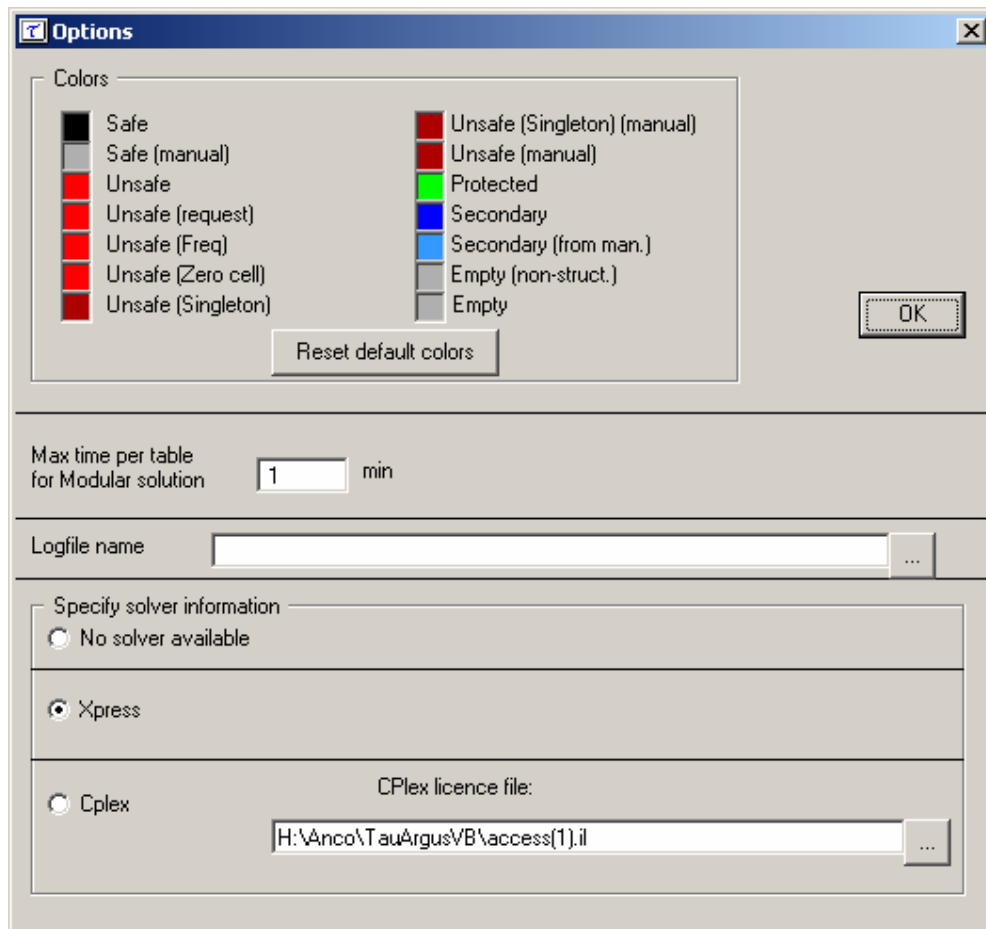
We advise you to completely uninstall any previous version of τ -ARGUS before installing a new version. Then install τ -ARGUS completely (using the `INSTALL.BAT`). This procedure will first install the drivers for Xpress-MP and then τ -ARGUS.

After completion of the installation you must copy the file `xpauth.xpr` into the τ -ARGUS directory which by default will be "C:\Program Files\TauARGUS". (To check this, ensure that the file `tauargus.exe` can be found there.)

When you first run τ -ARGUS go to the options window (Help|Options). (see next page). This is the place to inform τ -ARGUS that you will be using Xpress-MP. Select Xpress as your solver. τ -ARGUS will remember this setting so you only have to do it once.

This should complete the installation. For further questions please contact Anco Hundepool (ahnl@rnd.vb.cbs.nl).

If you need to use the network version of XPress see the separate information note on the CASC website.



(options screen of τ -ARGUS)

For further information contact:

Anco Hundepool
Statistics Netherlands
P.O. Box 4000
2270 JM Voorburg
The Netherlands
Phone: +31-70-3375038
Email: ahnl@rd.vb.cbs.nl